

650000

655000

660000

# Coal Mountain Phase 2 Project

5500000

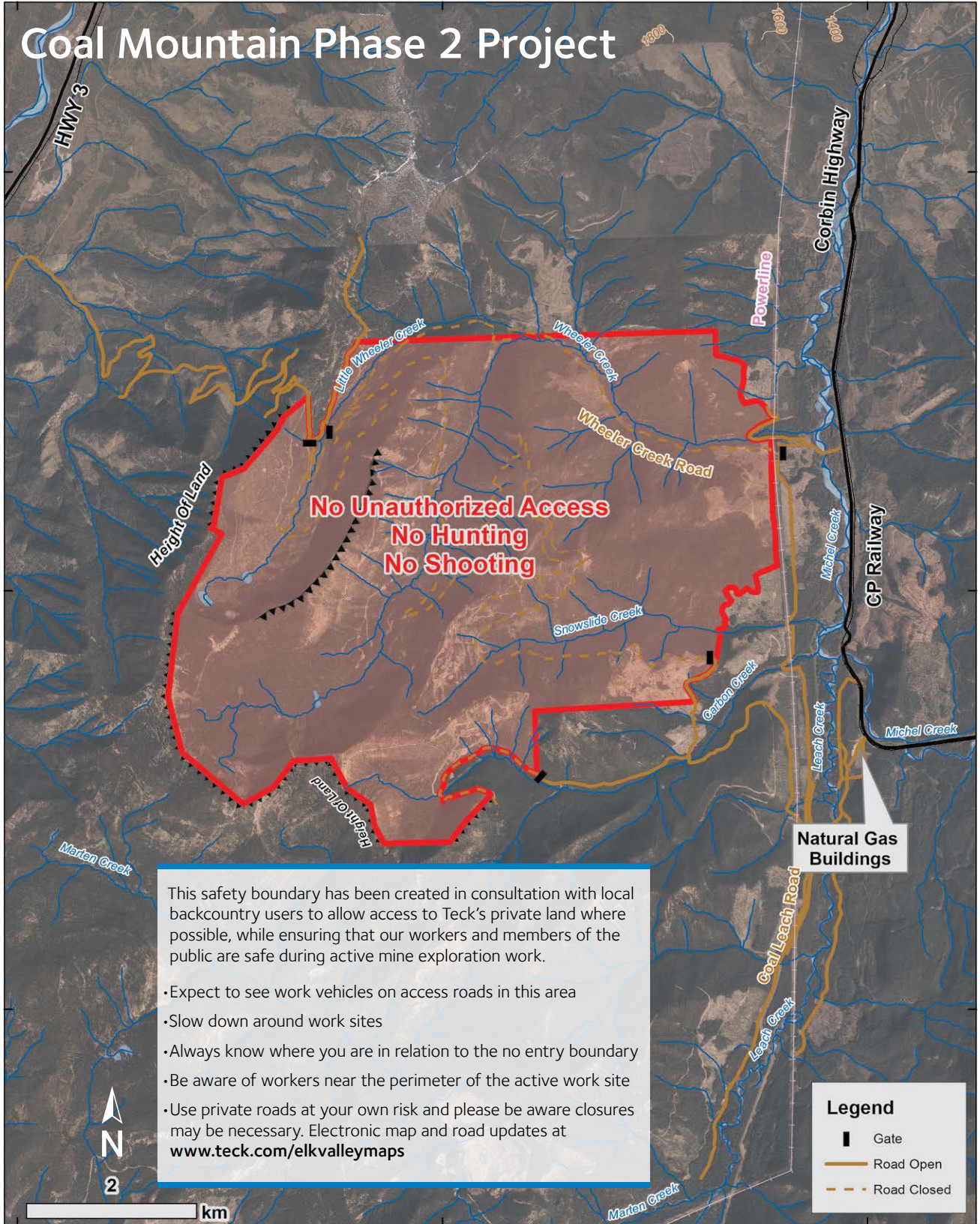
5495000

5490000

5500000

5495000

5490000



This safety boundary has been created in consultation with local backcountry users to allow access to Teck's private land where possible, while ensuring that our workers and members of the public are safe during active mine exploration work.

- Expect to see work vehicles on access roads in this area
- Slow down around work sites
- Always know where you are in relation to the no entry boundary
- Be aware of workers near the perimeter of the active work site
- Use private roads at your own risk and please be aware closures may be necessary. Electronic map and road updates at [www.teck.com/elkvalleymaps](http://www.teck.com/elkvalleymaps)

Legend	
	Gate
	Road Open
	Road Closed

650000

655000

660000

**For more information or to report an incident:**  
 Please call 250.425.3350 or ask at the gatehouse.